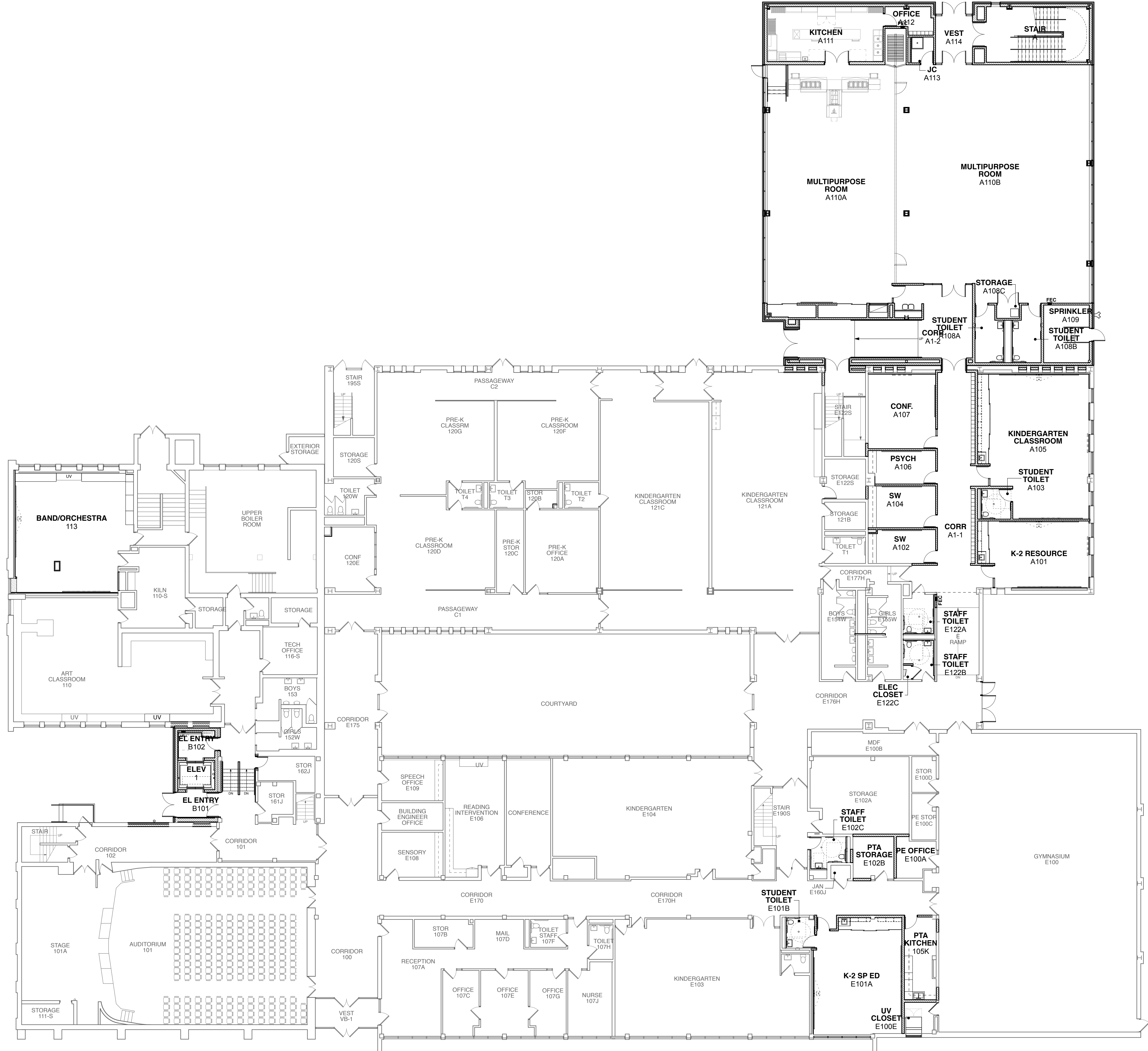


ARCHITECTS:

STR Partners LLC
350 West Ontario Street | Suite 200
Chicago IL 60654

T: 312.464.1444
www.strpartners.com

- CIVIL ENGINEERING:
TERRA ENGINEERING
225 West Ohio St. 4th Floor
Chicago, IL 60610
(312) 467-0123
- LANDSCAPE ARCHITECTURE:
TERRA ENGINEERING
225 West Ohio St. 4th Floor
Chicago, IL 60610
(312) 467-0123
- FOOD SERVICE CONSULTANT:
EDGE ASSOCIATES
150 Houston Street, Suite 304
Evanston, IL 60201
(855) 962-4422
- SCOPING AND BUILDING ENVELOPE:
STR-SEG
2015 Arlington Heights Rd, Suite 208
Arlington Heights, IL 60004
(847) 952-9608
- STRUCTURAL ENGINEERING:
C.E. ANDERSON & ASSOCIATES
175 North Franklin St, Suite 410
Chicago, IL 60605
(312) 915-0557
- MEP/FP ENGINEERING:
CS2 DESIGN GROUP
637 Oakton Street
Elk Grove Village, IL 60007
(847) 981-1880
- INTERIOR DESIGNER:
BULLLEY & ANDREWS
1755 W Armitage Ave
Chicago, IL 60622
(773) 235-2433



KEY PLAN

SCOPE DOCUMENT
This drawing is one drawing within a complete set of documents and shall not be considered separately from the Drawings as a whole. The Drawings indicate the general scope of the project in terms of architectural design concept, the dimensions of the building, the major architectural elements and the type of structural, mechanical, and electrical systems. As Scope Documents, the Drawings do not necessarily indicate or describe all work required for full performance and completion of the requirements of the Construction Documents. On the basis of the general scope indicated or described, the Contractor shall furnish all items required for the proper execution and completion of the Work.

Copyright Notice, Copyright © 2018 STR PARTNERS LLC
The information in this document is the intellectual property of STR Partners LLC. It is intended solely for use by the "Client" during only this specific project. Reproduction of any portion of this document for any purpose other than for its intended use is not permitted without specific written permission of STR Partners LLC.

PROJECT
LONGFELLOW ADDITIONS AND RENOVATIONS
715 Highland Ave
Oak Park, IL 60304

OAK PARK ELEMENTARY SCHOOL DISTRICT 97
260 W Madison St
Oak Park, IL 60302

CLIENT PROJECT NUMBER
STR PROJECT NUMBER
18032

DRAWING DATES

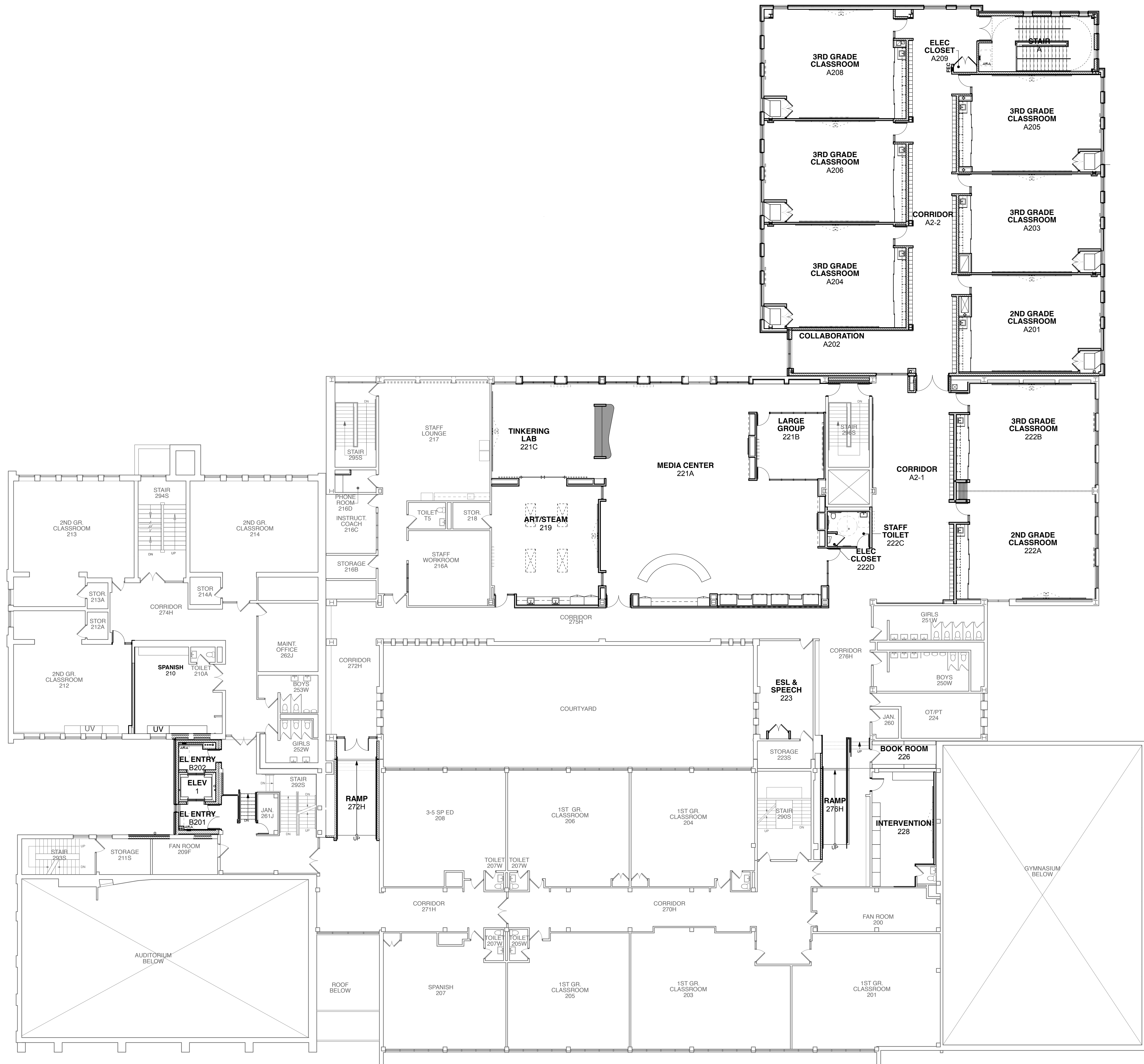
NUMBER	DATE	COMMENTS
3	DEC 14, 2018	ISSUE FOR BID PACKAGE 3
2	NOV 2, 2018	ISSUE FOR BID PACKAGE 2

DRAWING TITLE
COMPOSITE FIRST FLOOR PLAN (1)

SHEET NUMBER
LO.A0.0

0 IN
1 IN
2 IN
Actual Size to Match Section

- CIVIL ENGINEERING:
TERRA ENGINEERING
 225 West Ohio St. 4th Floor
 Chicago, IL 60610
 (312) 467-0123
- LANDSCAPE ARCHITECTURE:
TERRA ENGINEERING
 225 West Ohio St. 4th Floor
 Chicago, IL 60610
 (312) 467-0123
- FOOD SERVICE CONSULTANT:
EDGE ASSOCIATES
 150 Houston Street, Suite 304
 Batavia, IL 60010
 (855) 962-4422
- ROOFING AND BUILDING ENVELOPE:
STR-SEG
 2015 Arlington Heights Rd, Suite 208
 Arlington Heights, IL 60004
 (847) 952-9608
- STRUCTURAL ENGINEERING:
C.E. ANDERSON & ASSOCIATES
 175 North Franklin St, Suite 410
 Chicago, IL 60605
 (312) 915-0557
- MEP/FP ENGINEERING:
CS2 DESIGN GROUP
 637 Oakton Street
 Elk Grove Village, IL 60007
 (847) 981-1880
- INTERIOR DESIGNER:
BULLY & ANDREWS
 1755 W Armitage Ave
 Chicago, IL 60622
 (773) 235-2433



KEY PLAN

SCOPE DOCUMENT
 This drawing is one drawing within a complete set of documents and shall not be considered separately from the Drawings as a whole. The Drawings indicate the general scope of the project in terms of architectural design concept, the dimensions of the building, the major architectural elements and the type of structural, mechanical, and electrical systems. As Scope Documents, the Drawings do not necessarily indicate or describe all work required for full performance and completion of the requirements of the Construction Documents. On the basis of the general scope indicated or described, the Contractor shall furnish all items required for the proper execution and completion of the Work.
 Copyright Notice, Copyright © 2018 STR PARTNERS LLC
 The information in this document is the intellectual property of STR PARTNERS LLC. It is intended solely for use by the "Client" during only this specific project. Reproduction of any portion of this document for any purpose other than for its intended use is not permitted without specific written permission of STR PARTNERS LLC.

PROJECT
LONGFELLOW ADDITIONS AND RENOVATIONS
 715 Highland Ave
 Oak Park, IL 60304

OAK PARK ELEMENTARY SCHOOL DISTRICT 97
 260 W Madison St
 Oak Park, IL 60302

CLIENT PROJECT NUMBER
 STR PROJECT NUMBER
18032

DRAWING DATES

NUMBER	DATE	COMMENTS
3	DEC 14, 2018	ISSUE FOR BID PACKAGE 3
2	NOV 2, 2018	ISSUE FOR BID PACKAGE 2

DRAWING TITLE
COMPOSITE SECOND FLOOR PLAN

SHEET NUMBER
LO.A0.1

0 IN. 1 IN. 2 IN.
 ACTUAL SIZE TO MATCH DESIGN

ARCHITECTS:

STR Partners LLC
 350 West Ontario Street | Suite 200
 Chicago IL 60654

T: 312.464.1444
 www.strpartners.com

- CIVIL ENGINEERING:
TERRA ENGINEERING
 225 West Ohio St. 4th Floor
 Chicago, IL 60610
 (312) 467-0123
- LANDSCAPE ARCHITECTURE:
TERRA ENGINEERING
 225 West Ohio St. 4th Floor
 Chicago, IL 60610
 (312) 467-0123
- FOOD SERVICE CONSULTANT:
EDGE ASSOCIATES
 150 Houston Street, Suite 304
 Batavia, IL 60010
 (855) 962-4422
- SCOPING AND BUILDING ENVELOPE:
STR-SEG
 2015 Arlington Heights Rd, Suite 208
 Arlington Heights, IL 60004
 (847) 952-9608
- STRUCTURAL ENGINEERING:
C.E. ANDERSON & ASSOCIATES
 175 North Franklin St, Suite 410
 Chicago, IL 60605
 (312) 915-0557
- MEP/FP ENGINEERING:
CS2 DESIGN GROUP
 637 Oakton Street
 Elk Grove Village, IL 60007
 (847) 981-1880
- INTERIOR DESIGNER:
BULLLEY & ANDREWS
 1755 W Armitage Ave
 Chicago, IL 60622
 (773) 235-2433

KEY PLAN

SCOPE DOCUMENT
 This drawing is one drawing within a complete set of documents and shall not be considered separately from the Drawings as a whole. The Drawings indicate the general scope of the project in terms of architectural design concept, the dimensions of the building, the major architectural elements and the type of structural, mechanical, and electrical systems. As Scope Documents, the Drawings do not necessarily indicate or describe all work required for full performance and completion of the requirements of the Construction Documents. On the basis of the general scope indicated or described, the Contractor shall furnish all items required for the proper execution and completion of the Work.
 Copyright Notice, Copyright © 2018 STR PARTNERS LLC
 The information in this document is the intellectual property of STR PARTNERS LLC. It is intended solely for use by the "Client" during only this specific project. Reproduction of any portion of this document for any purpose other than for its intended use is not permitted without specific written permission of STR PARTNERS LLC.

PROJECT
LONGFELLOW ADDITIONS AND RENOVATIONS
 715 Highland Ave
 Oak Park, IL 60304

OAK PARK ELEMENTARY SCHOOL DISTRICT 97
 260 W Madison St
 Oak Park, IL 60302

CLIENT PROJECT NUMBER

STR PROJECT NUMBER
18032

DRAWING DATES

NUMBER	DATE	COMMENTS
3	DEC 14, 2018	ISSUE FOR BID PACKAGE 3
2	NOV 2, 2018	ISSUE FOR BID PACKAGE 2

DRAWING TITLE

COMPOSITE THIRD FLOOR PLAN

SHEET NUMBER

LO.A0.2



1 THIRD FLOOR COMPOSITE PLAN
 SCALE: 3/32" = 1'-0"

0 IN
 1 IN
 2 IN
 Actual Size to Match Section